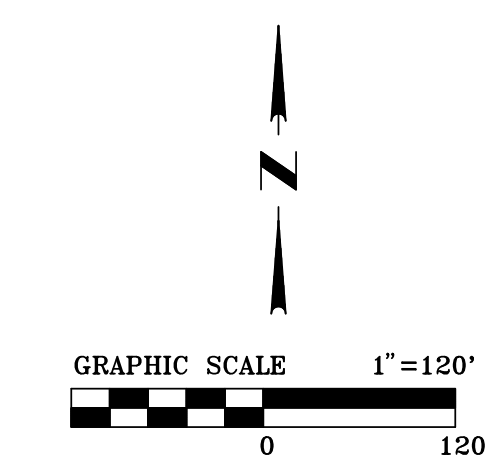
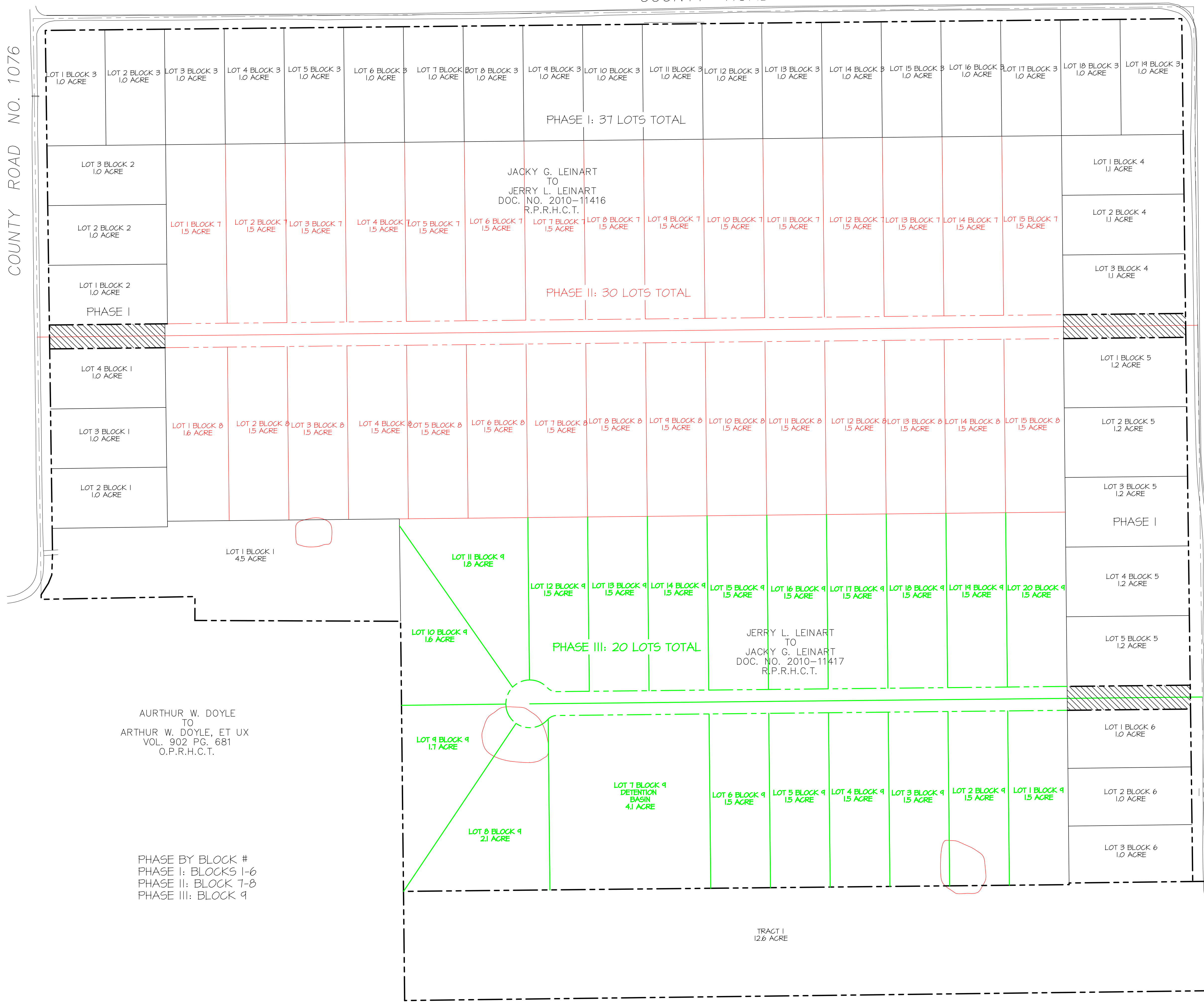


COUNTY ROAD NO. 1074

COUNTY ROAD NO. 1076



LEGEND	
	PROPERTY LINE
	CURB AND GUTTER
	BUILDING EDGE
	EDGE OF PAVEMENT
	EASEMENT
	BUILDING LINE OFFSET
	TOE OF DITCH/SLOPE
	TOP OF BANK
	OVERHEAD POWER LINE
	WATER MAIN
	SANITARY SEWER MAIN
	TELEPHONE LINE
	PROPOSED CONTOUR INT.
	EXISTING CONTOUR INT.
	SILT FENCE
	STORM DRAIN
	FIRE LANE
	SPOT ELEVATION
	POWER POLE
	WATER METER
	WATER VALVE
	CLEAN OUT
	SANITARY SEWER MANHOLE
	STORM DRAIN MANHOLE
	SIGN (TYPICAL)
	HANDICAP PARKING SYMBOL (PAINTED)
	FIRE HYDRANT
	LIGHT POLE
	GAS REGULATOR
	IRRIGATION CONTROL VALVE
	SPRINKLER HEAD
	ROOF DRAIN
	TELEPHONE JUNCTION BOX
	ELECTRIC JUNCTION BOX
	GUY WIRE
	TREE



AURTHUR W. DOYLE
TO
AURTHUR W. DOYLE, ET UX
VOL. 902 PG. 681
O.P.R.H.C.T.

PHASE BY BLOCK #
PHASE I: BLOCKS 1-6
PHASE II: BLOCK 7-8
PHASE III: BLOCK 9

JACKY G. LEINART
TO
JERRY L. LEINART
DOC. NO. 2010-11416
R.P.R.H.C.T.

JERRY L. LEINART
TO
JACKY G. LEINART
DOC. NO. 2010-11417
R.P.R.H.C.T.

LOT 7 BLOCK 9
DETENTION
BASIN
4.1 ACRE

TRACT 1
12.6 ACRE

WALTON TX WAGNER FIELDS LIMITED PARTNERSHIP
TO
WALTON TX WAGNER FIELDS ACQUISITION LP
DOC. NO. 2018-7298
R.H.C.T.

COUNTY ROAD NO. 1074

COUNTY ROAD NO. 1080

<p>MTG STOVALL ENGINEERS & SURVEYORS 6417 WESLEY STREET GREENVILLE, TX P 903.836.8523 www.stovallassociates.com TXBE Firm No. F-354 © MTG 2022</p>	
<p>PRELIMINARY ~ FOR REVIEW ONLY. NOT INTENDED FOR BIDDING, CONSTRUCTION OR PERMIT PURPOSES 3/3/2022 VANCE F. LILES P.E. #131529</p>	
Scale	AS SHOWN
Drawn By	CAD
Checked By	VFL
File No.	
<p>PHASING PLAN</p>	
<p>BRIAR BRANCH HUNT COUNTY, TX GLA VENTURES</p>	
Drawing Date	3/3/2022
Project Number	216245
Sheet Number	EX-1

X:\2021 Projects\216245 Briar Branch\05 Engineering Design\DESIGN_01.pro
Thu Mar 3, 2022 10:44AM