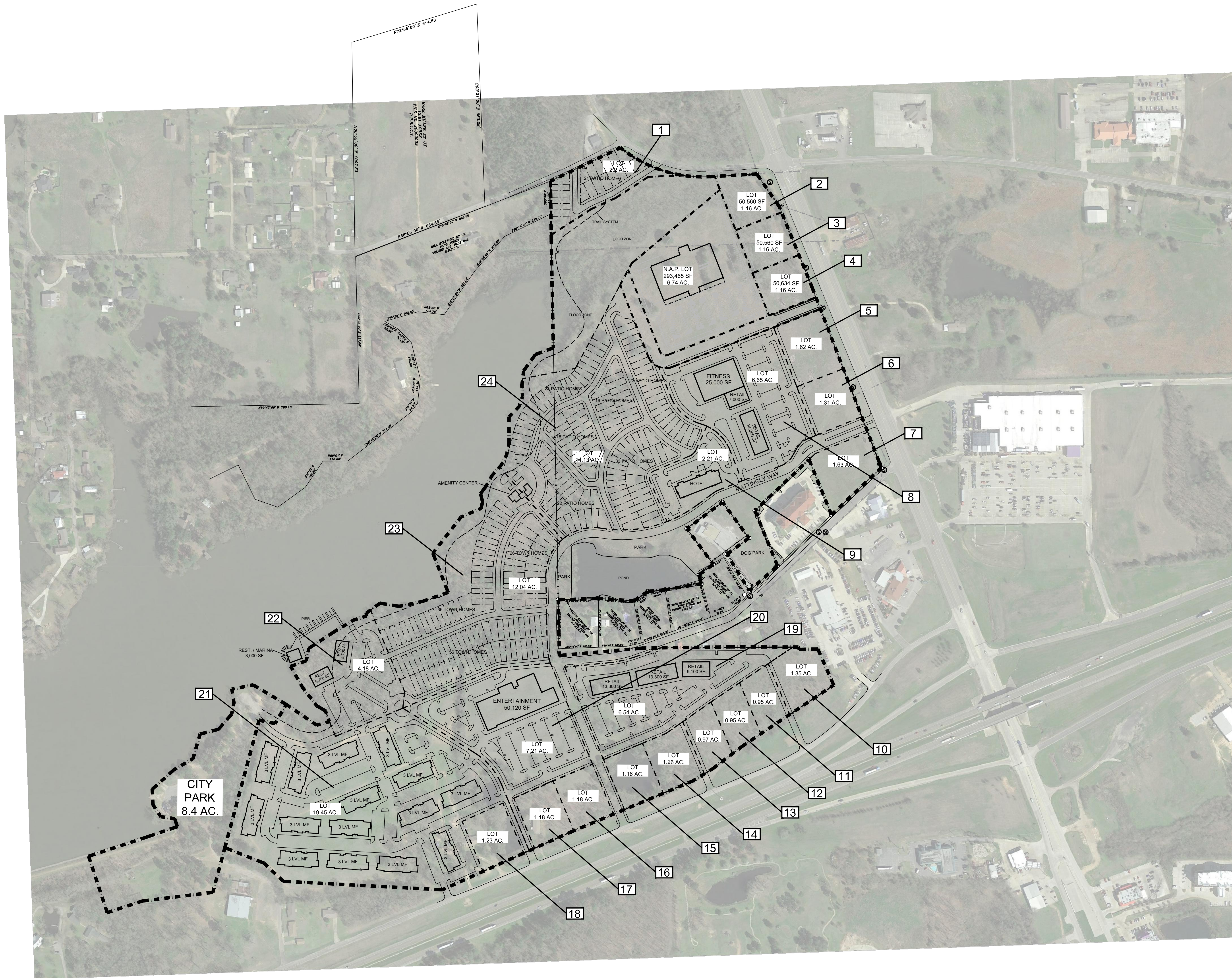


OBRIEN

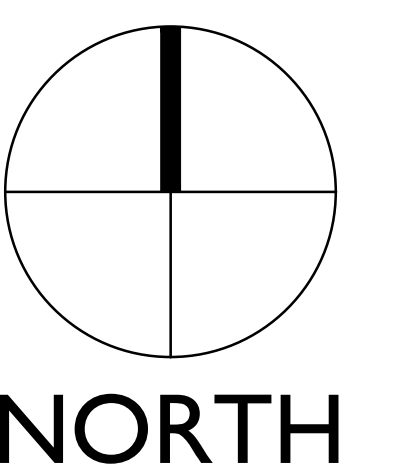
ANDERSON TOWN CENTER

MOUNT PLEASANT, TX // DESIGN PACKAGE // 2020.01.06

- LOT 01 = 2.20 AC - 21 PATIO HOMES
 - LOT 02 = 1.16 AC - PAD SITE, 3,500 SF BLDG. AREA
 - LOT 03 = 1.16 AC - PAD SITE, 3,500 SF BLDG. AREA
 - LOT 04 = 1.16 AC - PAD SITE, 3,500 SF BLDG. AREA
 - LOT 05 = 1.62 AC - PAD SITE, 5,000 SF BLDG. AREA
 - LOT 06 = 1.31 AC - PAD SITE, 4,000 SF BLDG. AREA
 - LOT 07 = 1.63 AC - PAD SITE, 6,000 SF BLDG. AREA
 - LOT 08 = 6.65 AC - COMMERCIAL / FITNESS,
46,000 SF BLDG. AREA
 - LOT 09 = 2.21 AC - HOTEL
 - LOT 10 = 1.35 AC - PAD SITE, 3,500 SF BLDG. AREA
 - LOT 11 = 0.95 AC - PAD SITE, 3,500 SF BLDG. AREA
 - LOT 12 = 0.95 AC - PAD SITE, 3,500 SF BLDG. AREA
 - LOT 13 = 0.97 AC - PAD SITE, 3,500 SF BLDG. AREA
 - LOT 14 = 1.26 AC - PAD SITE, 4,000 SF BLDG. AREA
 - LOT 15 = 1.16 AC - PAD SITE, 3,500 SF BLDG. AREA
 - LOT 16 = 1.18 AC - PAD SITE, 3,500 SF BLDG. AREA
 - LOT 17 = 1.18 AC - PAD SITE, 3,500 SF BLDG. AREA
 - LOT 18 = 1.23 AC - PAD SITE, 3,500 SF BLDG. AREA
 - LOT 19 = 6.54 AC - COMMERCIAL, 35,700 SF BLDG. AREA
 - LOT 20 = 7.21 AC - COMMERCIAL, 50,120 SF BLDG. AREA
 - LOT 21 = 19.45 AC - 540 UNITS, MULTI FAMILY
 - LOT 22 = 4.18 AC - COMMERCIAL / MARINA,
14,400 SF BLDG. AREA
 - LOT 23 = 12.04 AC - 118 TOWN HOMES
 - LOT 24 = 14.13 AC - 136 PATIO HOMES
- TOTAL:**
 PAD SITES = 18.27 AC
 COMMERCIAL / FITNESS = 24.58 AC, 146,200 SF
 PATIO HOMES = 16.33 AC, 157 LOTS
 TOWN HOMES = 12.04 AC, 118 LOTS
 MULTI FAMILY = 19.45 AC, 540 UNITS
 HOTEL = 2.21 AC



NOTE: THIS PLAN IS FOR PRELIMINARY PLANNING PURPOSES ONLY. ALL DIMENSIONS AND PROPERTY LINES ARE ESTIMATES AND DO NOT REFLECT ANY SURVEY. PLAN MAY NOT MEET ALL CITY REQUIREMENTS.





VIEW // 01
ANDERSON TOWN CENTER



VIEW // 02
ANDERSON TOWN CENTER





VIEW // 04
ANDERSON TOWN CENTER



VIEW // 05
ANDERSON TOWN CENTER



VIEW // 06
ANDERSON TOWN CENTER



VIEW // 07
ANDERSON TOWN CENTER